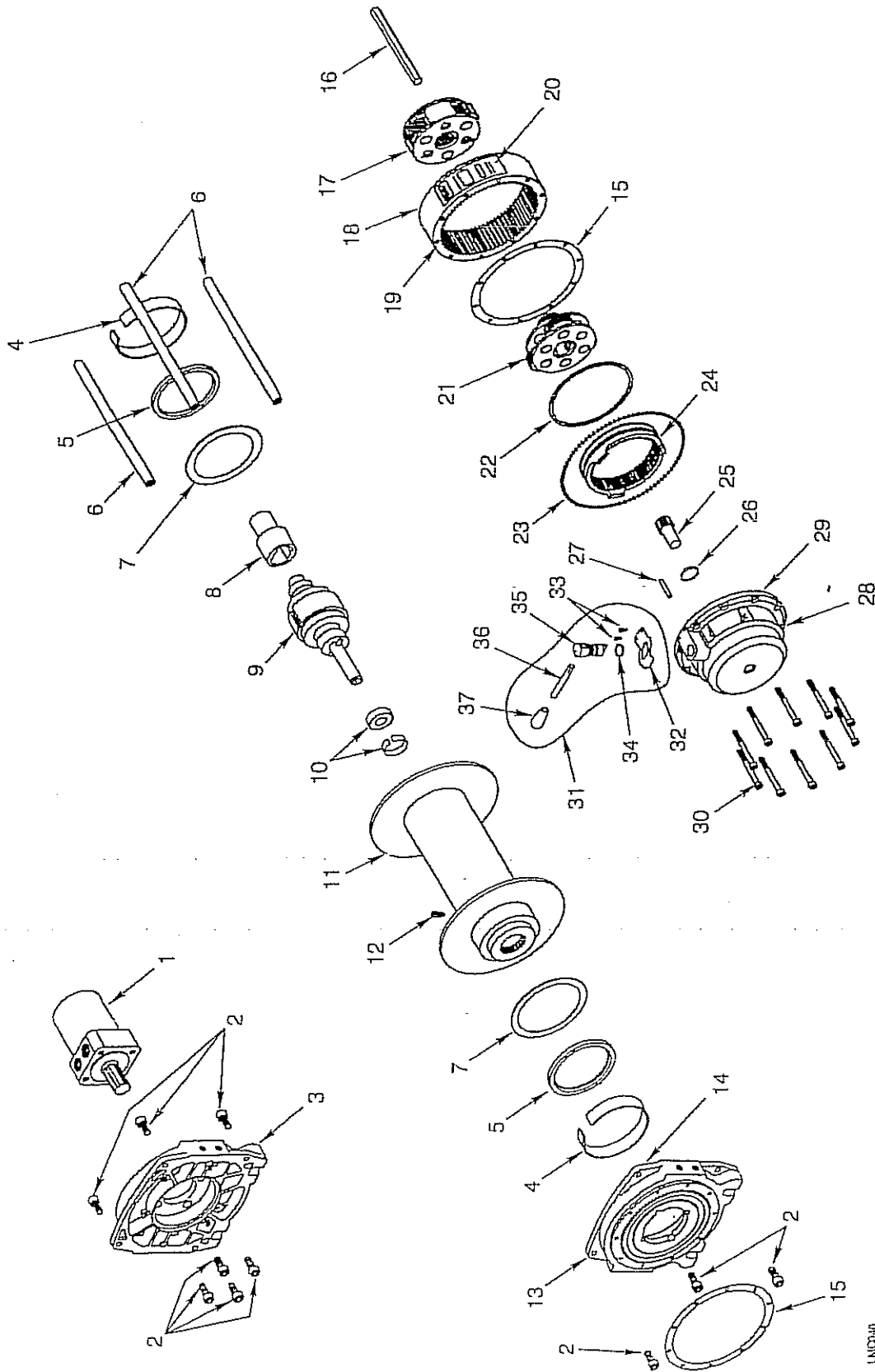


WINCH ASSEMBLY



LINCOR



WINCH ASSEMBLY

ITEM	NOTES	PART NUMBER	QTY	DESCRIPTION
		7395		Winch Assembly
1		7382	1	Motor, Hydraulic
2		30328	10	Capscrew, 3/8-16 x 3/4 SOC HD
3		31670	1	S/P Drum Support Assembly, Hydraulic Motor End
4		30274	2	Bushing, Drum, Nylatron, CIM LG FRM
5		30275	2	(Vins) Seal, Radial Oil
6		30268	3	Tie Rod, Tapped, .625 DIA. x 10.580
7		30277	2	Washer, Thrust, Nylatron, CIM LG FRM
8		30259	1	Driver, Brake, Hydraulic Brake
9		31673	1	S/P Disk Brake Assembly, CCW Hydraulic
10		31672	1	S/P Bearing and Tolerance Ring
11		31671	1	S/P Drum Assembly, STD
12		36974	1	Screw, Set, Rope Anchor
13		31675	1	S/P Drum Support Assembly, Geartrain End
14		30331	1	Label, Drum Rotation
15		14964	2	Gasket, Ring Gear
16		30313	1	Hex Shaft, Drive, 1/2 x 6.257
17		30336	1	Carrier Assembly, Stage 3, 4340 Planet
18		31679	1	S/P Ring Gear Assembly, Series 12
19		34552	1	Label, Warning, Series Winches
20		27896	1	Label, Nameplate, Series 12
21		24563	1	(R/KB) Carrier Assembly, Stage 2
22		34848	1	Retaining Ring, Locking Ends, Spiral
23		22350	1	S/P Ball Set, 3/16, 85pc
24		14916	1	Ring Gear, Clutch, M10
25		16149	1	Gear, Sun, 15T
26		21009	1	Thrust Plate, Fs Winch
27		30323	1	Pin, Clutch Retainer
28		31684	1	S/P Gear Housing Assembly, Series 12
29		34551	1	Label, Clutch Engagement
30		15603	10	Capscrew, 1/4-20 x 3 SOC HD, GR8
31		34568	1	S/P, Clutch Lever Assembly
32		NSS	1	. Latch, Safety, Winch Clutch, .855 DIA.
33		NSS	2	. (KB) 10-24 x 1/2, Type F, Philip Pan Head
34		NSS	1	. Seal, O-ring, AS568-113
35		NSS	1	. Clutch Shaft
36		NSS	1	. Clutch Lever, CCW
37		NSS	1	. Knob
38		7431	1	Fairlead Roller Assembly (Not Shown)